



---

**THE ONLY EASY DAY WAS YESTERDAY**



**COMNAVSPECWARCOM shall recruit, organize, train, man, equip, educate, sustain, secure, maintain combat readiness, and deploy Active Component and Reserve Component NSW forces and personnel to accomplish special warfare missions assigned by Commander, United States Special Operations Command (CDR USSOCOM) or, as authorized, combatant commanders (CCDRs) employing special operations forces (SOF).**



*SEALs dive onto a Submarine during a training operation.*

Located in Coronado, Calif., Naval Special Warfare Command leads the Navy's maritime special operations force and is the Navy component to U.S. Special Operations Command, headquartered in Tampa, Fla. NSW is a full-spectrum special operations force uniquely positioned to defend U.S. national interests in the maritime domain.

# SOF TRUTHS

HUMANS ARE MORE  
IMPORTANT THAN HARDWARE

QUALITY IS BETTER  
THAN QUANTITY

SPECIAL OPERATIONS  
FORCES CANNOT BE  
MASS PRODUCED

COMPETENT SPECIAL  
OPERATIONS FORCES  
CANNOT BE CREATED AFTER  
EMERGENCIES OCCUR

MOST SPECIAL OPERATIONS  
REQUIRE NON-SOF  
ASSISTANCE

~2,900 Active Duty SEALs

~800 Active Duty SWCC

~5,000 CS/CSS

~700 Reservists

~1,200 Civilians

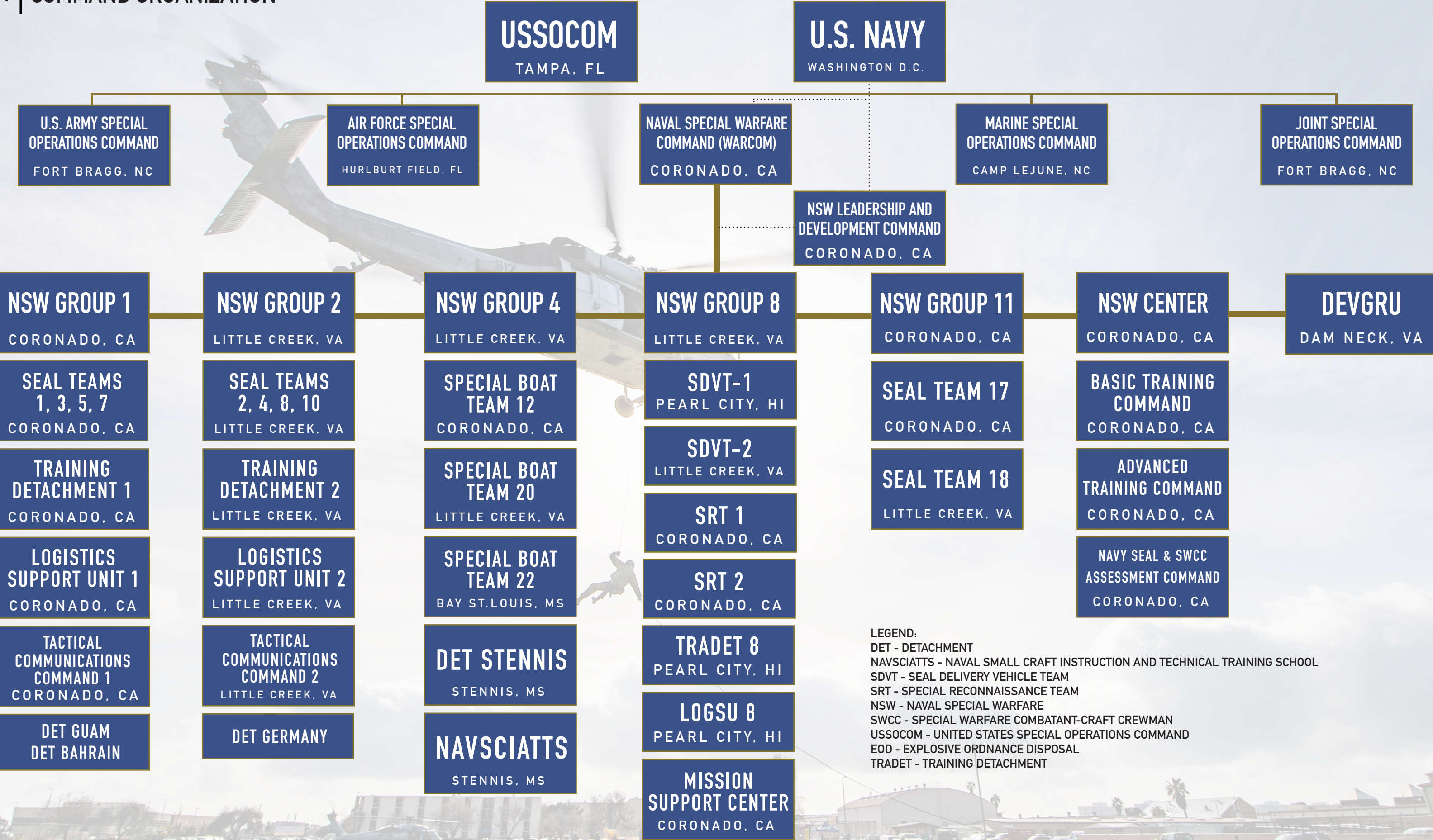
---

---

~10,700 Total Personnel

*\*Combat Support/Combat Service Support*







SEALs and SWCCs undergo some of the toughest and most comprehensive military training in the world at the Naval Special Warfare Center in Coronado, Calif. The rigorous assessment, selection, and training process is beyond demanding and must produce mature, highly-skilled, culturally-attuned naval commandos who can be trusted to accomplish some of our nation’s most sensitive no-fail missions.

BASIC  
TRAINING COMMAND

Assess, selects, and trains candidates based on:

- |                     |            |
|---------------------|------------|
| Mental Fortitude    | Humility   |
| Physical Competence | Creativity |
| Courage             | Teamwork   |
| Integrity           | Resiliency |

ADVANCED  
TRAINING COMMAND

84 courses of advanced skills instruction in 14 geographic locations to include:

- |                   |                     |
|-------------------|---------------------|
| Sniper Training   | Jump Master         |
| Diving Supervisor | Combatives          |
| SERE              | Language School     |
| Breaching         | Combat Medic School |



“ABANDON SELF, EMBRACE TEAM”



# “BE SOMEONE SPECIAL”

The maritime-focused, multi-purpose combat forces known as Navy SEALs take their name from the elements in which they operate – sea, air and land. As expert warfighters in the maritime environment, SEALs are often tasked with the following:

Planning and Executing Missions  
Special Reconnaissance  
Direct Action  
Unconventional Warfare  
Maintaining Forward Presence

Foreign Internal Defense  
Information Warfare  
Security Assistance  
Counter-Drug Operations  
Personnel Recovery/Hostage Rescue

---

## SEAL delivery methods include:

- Navy Surface Ships
- SEAL Delivery Vehicles (SDV)
- Special Warfare Combatant Craft
- Tactical Ground Mobility Vehicles, i.e. M-ATVs, ATVs,
- Diver Propulsion Devices
- Airborne insertion through fixed and rotary-wing aircraft



# “ON TIME, ON TARGET, NEVER QUIT”

Special Warfare Combat Crewman, or SWCC, operate and maintain small, specialized boats for special operations missions in support of NSW. Special Boat Teams are an assault force trained in boating and weapons tactics, techniques, and procedures that focus on clandestine infiltration and exfiltration of SEALs and other special operations forces and support to the fleet.



*A SWCC Crewman operates a F470 combat rubber raiding craft.*



# THE SURFACE ADVANTAGE

NSW has a multitude of unique capabilities in the world of Surface Warfare. Our surface systems encompass platforms like Combatant Craft Assault (CCA), Combatant Craft Medium (CCM), Combatant Craft Heavy (CCH), Special Operations Craft-Riverine (SOC-R) and additional, unconventional surface craft.



## Combatant Craft Assault (CCA)

The CCA excels in medium-range special operations and can be used to conduct maritime interdiction, littoral patrol, and insertion / extraction of other SOF units.

## Combatant Craft Medium (CCM)

The CCM is a semi-enclosed multi-mission craft for platoon-sized maritime mobility in denied environments. It is multi mission capable, including Maritime Interdiction, and Insert / Extract, and VBSS Operations.

## Combatant Craft Heavy (CCH) aka SEALION

The SEALION is designed to provide long-range insertion and extraction capabilities for special operations forces. Jet Skis, inflatable rubber raiding craft and diving equipment can be carried and launched out the stern.

## Special Operations Craft-Riverine (SOC-R)

The SOC-R is designed to operate along river networks and coastal areas, chiefly for the insertion and extraction of Navy SEALs.



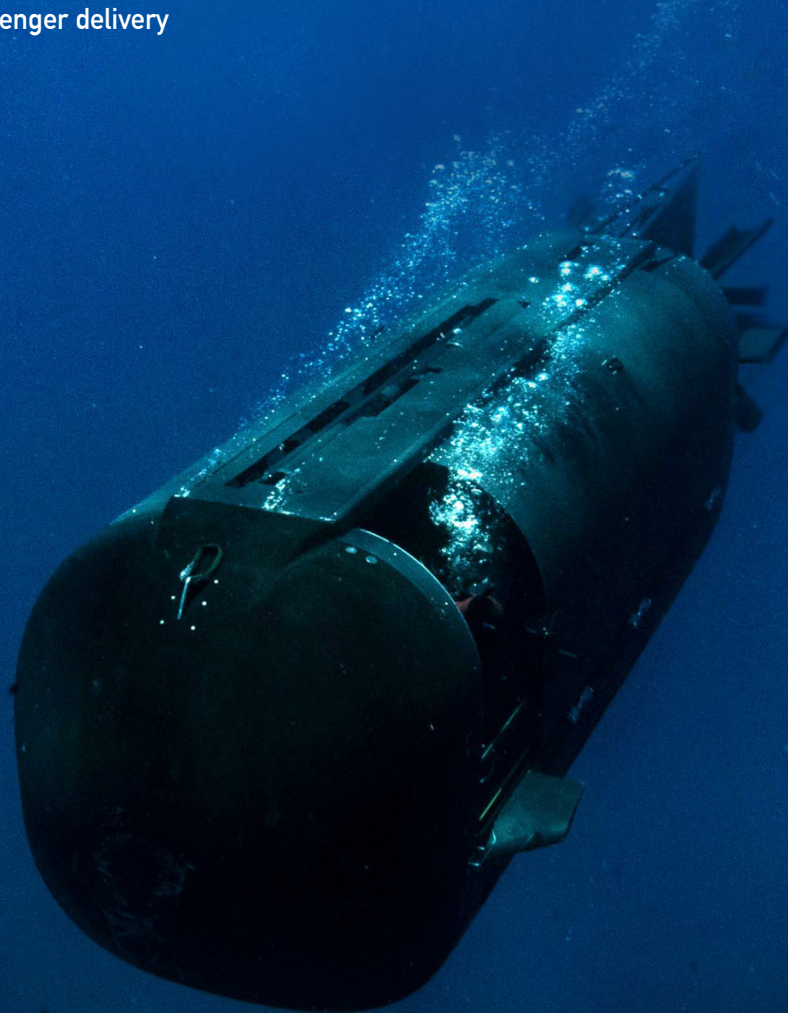
# THE SILENT ADVANTAGE

The SEAL Delivery Vehicle (SDV) is a crewed submersible used to covertly deliver SEALs, Divers and their equipment for SOF missions to denied access areas (either held by hostile forces or where military activity would draw notice and objection). It is generally deployed from the Dry Deck Shelter on a specially-modified attack or ballistic missile submarines, although it can also be launched from surface ships or land.

---

## SEAL Delivery Vehicle Teams

- Operate and maintain SDVs, Dry Combat Submersibles (DCS), Dry Deck Shelters
- Sustained by underwater breathing apparatus
- Support clandestine reconnaissance, direct action and passenger delivery
- Replacing MK 8 SDVs with MK 11 and DCS for a greater payload
- Deploy from Submarines, Surface Ships, Cargo Aircraft (C-130), and from land



*SEALs and Navy Divers pilot a SDV Mark 11 to conduct routine navigation training.*




# THE UNMANNED ADVANTAGE

The essence of unmanned is the physical removal or remote location of the human from the platform. Autonomy gives capable machines the ability to adapt interactively to the dynamic maritime environment. This is critical when the world cannot be predicted, adaptation must occur in the face of overwhelming data, adaptation must occur at machine speed, communications are limited or unreliable.

## Unmanned Opportunity Areas include:

- Space Warfighting
- Cyberspace Warfighting
- Advanced Autonomous Systems
- Joint Lethality in Contested Environment
- Command, Control, Communications, Computers, Intelligence, Surveillance, Reconnaissance, Targeting (C4ISR-T)
- Dynamic Force Employment Plans
- Global Operating Model
- Forward Force Maneuver and Posture Resilience
- Utilize other agency UxS and MUM-T systems and operating concepts where capabilities and/or cost effectiveness is needed



Sailors deploy an unmanned aerial vehicle off the back of a Combatant Craft Medium (CCM).



A SEAL fast-ropes out of an MH-60S Nighthawk helicopter onto the flight deck of an aircraft carrier.

# OUR FIRST AIM IS ALWAYS TO DETER

NSW gains and maintains access for the Fleet and Joint Force in support of integrated deterrence. Our ability to conduct special reconnaissance and surveillance actions provides a critical and strategic intelligence capability for commanders as they develop situational awareness for high-level decision making to deter conflict.

NSW's close integration with the Fleet and ability to operate from sea-bases creates decision space and provides options for our nation's leaders.

*Should conflict arise, NSW operators are uniquely positioned forward to fight alongside the Joint Force, our allies, and our partners.*



# THE NSW FORCE MULTIPLIER

*A Navy Diver rigs her MK-25 underwater breathing apparatus before a high-altitude dive.*

## COMBAT SUPPORT

Provides assistance in explosive ordnance disposal, identification, collection, planning, targeting, analysis and fusion resulting in speed, interpretation, exploitation, maritime mobility (insertion and extraction), and medical care for the Ground Force Commander while integrated into and primarily operating within SEAL combat elements.

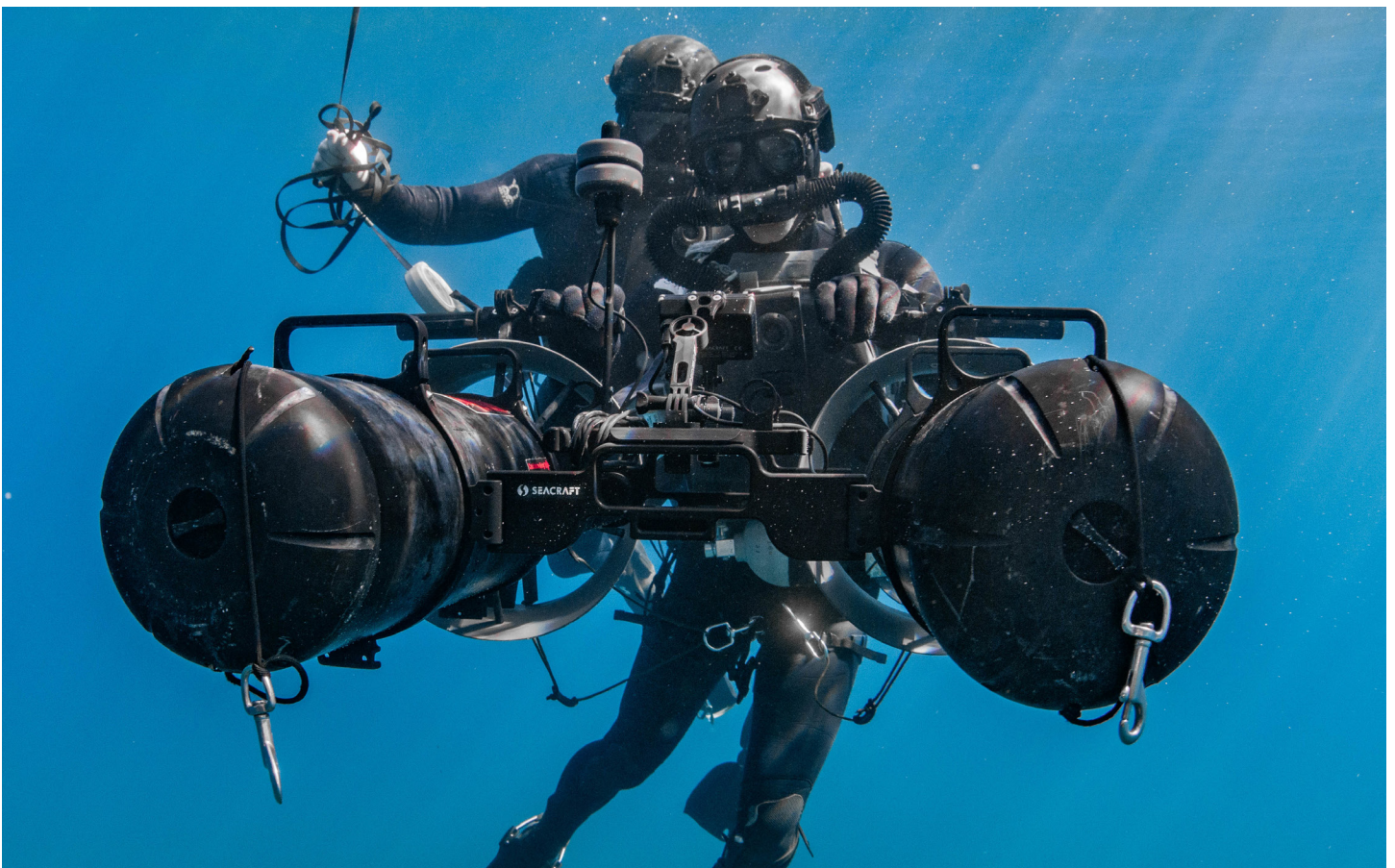
## COMBAT SERVICE SUPPORT

Provides supply/logistics, health services, administrative command and control, communications, mission planning, small boat operations, weapons maintenance and other essential functions and tasks necessary to sustain the needs of all elements of operating forces in the theater at all levels of war.

---

Naval Special Warfare's greatest strength is our people—active and reserve uniformed personnel and their families, our collective legacy of former special operators, and our current and past civilian force. We owe it to our people to create an ecosystem that recruits and retains diverse, technically-skilled personnel, educates them to out-think our adversaries, trains them to work with new technologies, and provides them with the resources to prevail in competition, crisis, and conflict.









NAVAL SPECIAL WARFARE COMMAND  
2000 TRIDENT WAY, BLDG. 624  
SAN DIEGO, CA 92155-5599  
NSW.NAVY.MIL

